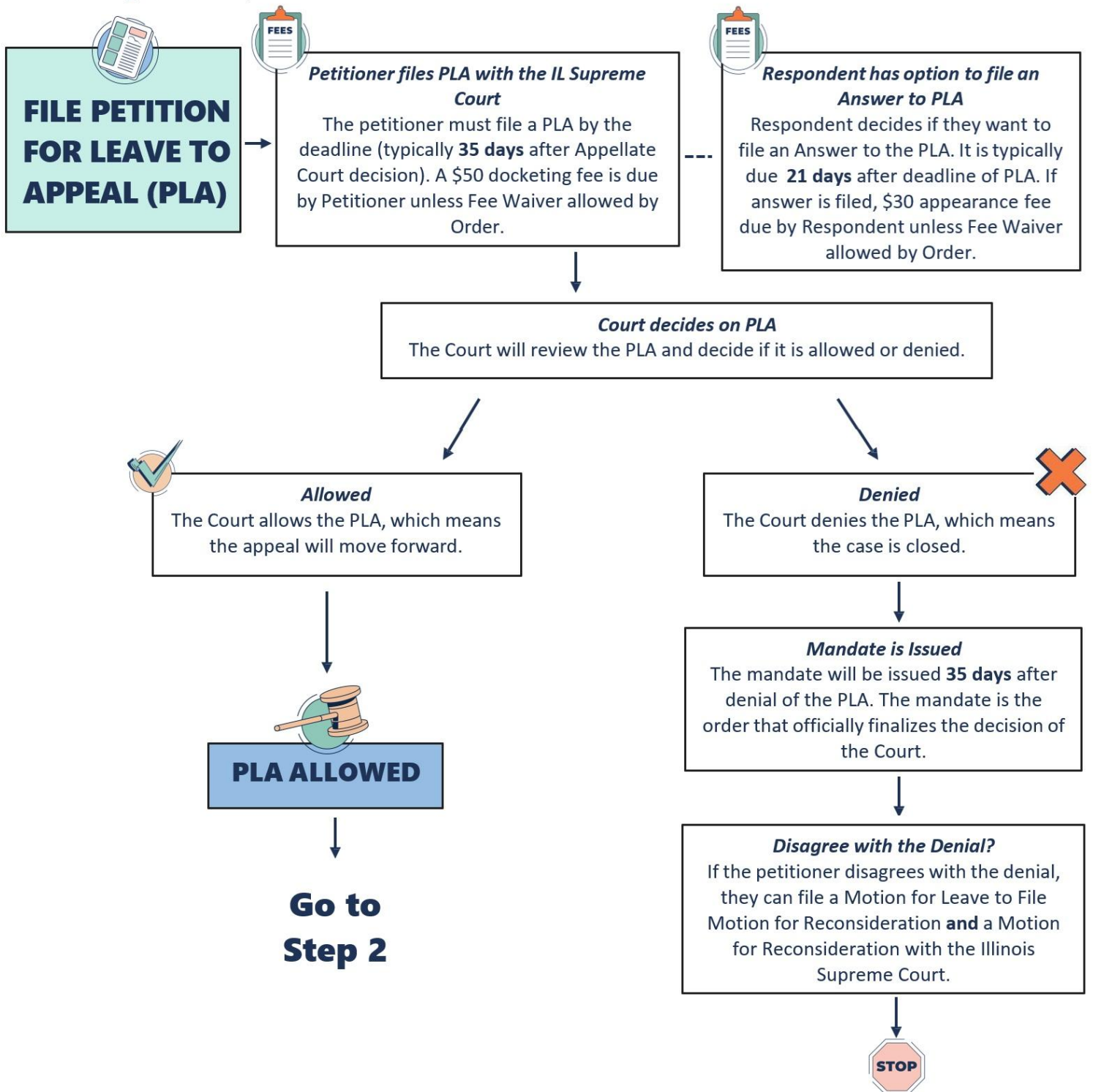


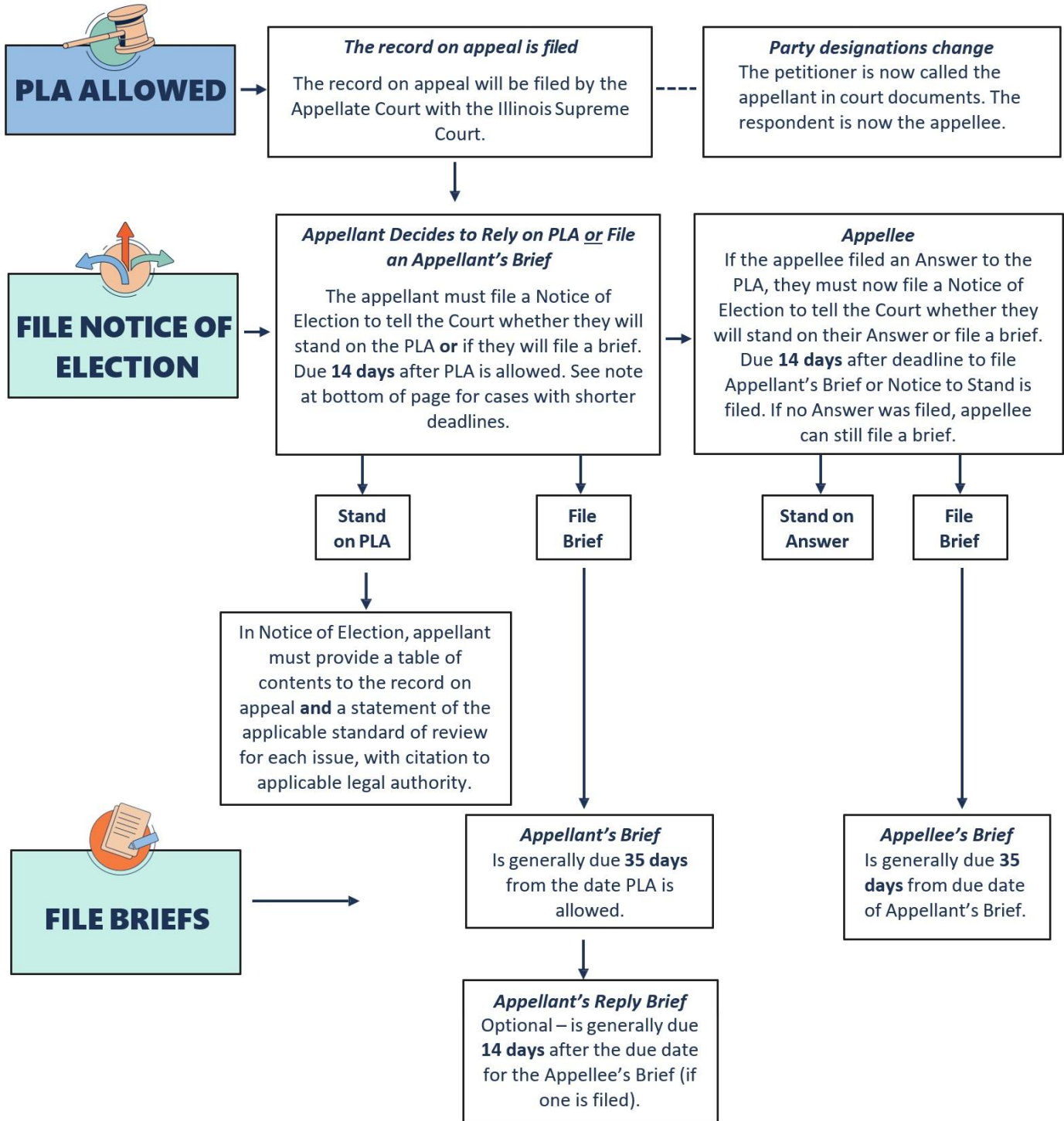
STEPS IN A PETITION FOR LEAVE TO APPEAL TO THE ILLINOIS SUPREME COURT

Step 1



NOTE: You can find all Supreme Court Rules at: ilcourts.info/supreme-court-rules. Forms and instructions for a PLA are available at: ilcourts.info/forms and additional resources at ilcourts.info/appl-resources. Contact the Supreme Court Clerk's office for further information: ilcourts.info/supreme-clerk.

Step 2



Cases involving parental responsibility (child custody, visitation, or relocation), juvenile delinquency, and pretrial release appeals have a **shorter deadline** to file a Notice of Election and briefs. Contact the Supreme Court Clerk's office for further information: ilcourts.info/supreme-clerk.

